



QUALITY ANALYSIS ON TIME,
EVERY TIME.

COLLABORATION WITH THE CNH

The Petricore-Wasserment consortium manages and operates the national core stores of the National Hydrocarbons Commission (CNH), which are located in Hidalgo and Yucatan in Mexico.

About us

Petricore is a global provider of formation evaluation services in laboratory and at wellsite, with over 40 years of experience.

The Petricore Group offers the oil and gas industry quality services that extend from initial wellsite operations to the life of the reservoir.

Collaboration

The Hidalgo and Yucatan core stores offer basic petrophysical laboratory services, laboratory geological studies, rock mechanics, advanced rock properties, reservoir engineering tests, reservoir fluid tests, and sample evaluation.

Benefits

- Use of state-of-the-art technology.
- Application of cutting-edge methodology.
- Our technical experts can assist and advise your company in making decisions for your routine core analysis or your special core analysis program, considering the information available in the Hidalgo and Yucatan National Core Stores.
- Reduction of the time to obtain results of the requested services.



CONTACT US



USA Houston Mexico Villahermosa Norway Trondheim

sales@petricore.com
www.petricore.com



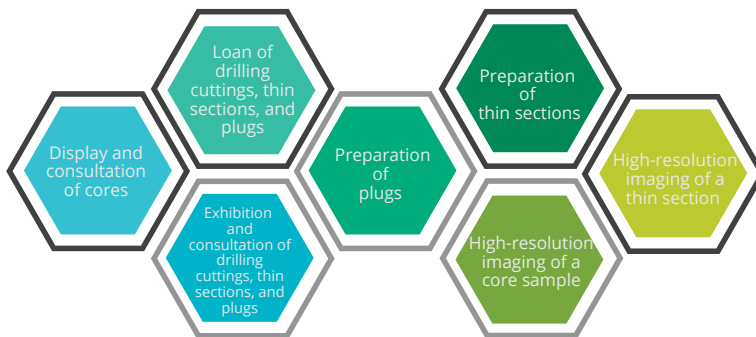
CNH SPECIALIZED SERVICES



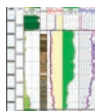
QUALITY ANALYSIS ON TIME,
EVERY TIME.

SERVICES

7 services within the Core stores



54 specialized services in Petricore's lab



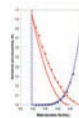
Basic petrophysics

Measure and analyze the properties of the rocks (porosity, permeability, fluid saturation, density, lithology and texture) that allow characterizing the reservoirs and modeling their behavior.



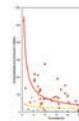
Laboratory geological studies

Provide necessary data to determine the facies and depositional environments represented in a conventional core interval, allowing the identification of the various types of rocks that make up the geological formations.



Advanced rock properties

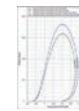
Determine special properties that allow forecasting the behavior of the reservoir, identify unusual responses to treatments in the well, improve log interpretation and provide useful information for secondary and enhanced recovery programs.



Rock mechanics

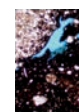
Study the behavior of a rock under variable stress/tension conditions, with the purpose of making informed decisions during drilling and production operations.

With the results it is possible to calibrate parameters for the design of the wells, quantify the compressibility of the formation and identify problems in brittle or fractured systems.



Reservoir fluid analysis

Provide data on the thermodynamic behavior of fluids. The results allow optimizing the facilities and maximizing the exploitation of the reservoirs. They also determine the quality of the produced fluids and generate information about their properties, allowing the design of extraction strategies under different conditions.



Other services

Processes to verify the quality of physical samples for carrying out possible studies.

CONTACT US



USA Houston | Mexico Villahermosa | Norway Trondheim

sales@petricore.com
www.petricore.com



CNH SPECIALIZED SERVICES